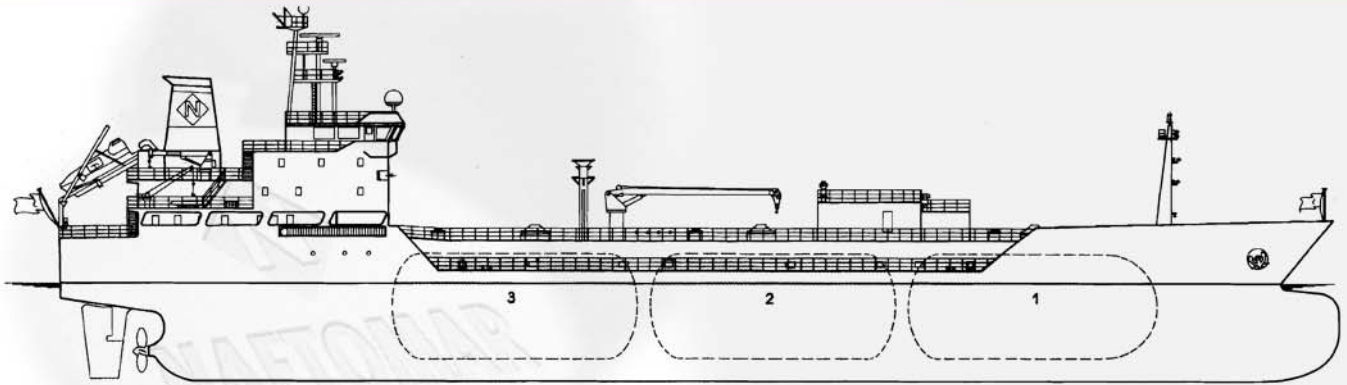




NAFTOMAR



GAZ VENEZIA

GENERAL CHARACTERISTICS

Owners: TRANSTAR S.A., PANAMA
Built: 1995-INMA LA SPEZIA, ITALY
Flag: PANAMA
Class: DNV +1A1
Call Sign: 3FVT5
GRT/NRT
International: 6,105 / 2,100
Suez: 6,600 / 4,910
Panama: ----
IMO: YES
USCG: YES
RINA: YES
MOT: NO

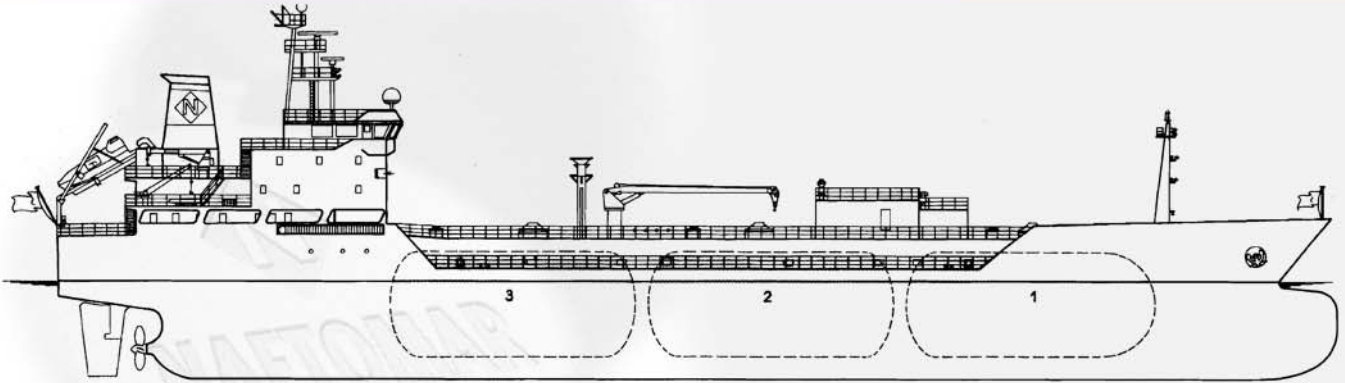
LOA: 112.00 m
LBP: 103.00 m
Breadth Moulded: 17.60 m
Depth Moulded: 9.80 m
DWT, Summer: 7,569 mtns
Draft, Summer: 8,50 m
Draft, Propane: 7,00 m
Draft, Butane: 7,40 m
Air Draft: 32.50 m

Main Engine: WARTSILA VASA 6R 46
Maximum Power: 7,384 bhp / 500 rpm
Fuel Grade: IFO 380cst
Consumption/day: 22.5 mtns
Speed (Average): 14.50 knots
Auxiliaries: Three WARTSILA (2 X 4R20) + (1 X 6R20)
Power: 2 x 584 kw + 1 x 872 kw, one shaft generator
Total Available: 2,040 kw (aux engines) and 1,875 kw (shaft generator)
Grade/Consumption: IFO 380: 1.8 - 3.8 mtns
Bunker Capacity: IFO: 684.2 mtns (98%)
MDO: 87.9 mtns (98%)

Particulars herein believed to be correct but not guaranteed



NAFTOMAR



GAZ VENEZIA

CARGO PLANT AND HANDLING EQUIPMENT

MARVS: 7.5 / 5.0 bar.g IMO/USCG
Min. Temperature: minus 48°C
Max. Specific Gravity: 0.97
Max. Vacuum: 0.25 bar.g
Cargo Pumps: Six SVANEHOJ deepwell pumps, 160 m³/hr at 120 mlc each
Cargo Compressors: Three SULZER 2K-140 2F, oil free, 831.3 m³/h stage 1, 360.3 m³/h stage 2
Cargo Heater: One VILLA SCAMBIATORI, using sea water, 500 m³/hr (sea water +15°C)
Booster Pumps: Two SVANEHOJ NM 150C, horizontal, centrifugal, 250 m³/hr at 120 mlc each
Deck Tanks: N/A
Inert Gas Plant: One SMIT-OVENS 1,200 m³/hr O₂ 0.1-0.5%, CO₂ 14%, D.P. minus 60°C
Cargo Vaporizer: Yes
Bow Thruster: N/A
Cargo Manifolds: Liquid line: 8" - 6" ASA 300
Vapour line: 6" - 4" ASA 300

INDICATIVE CAPACITIES OF CARGO TANKS

TANK No.	CBM 100% (m3)	S.G. T°C	BUTANE 0.605 minus 0.5°C	PROPANE 0.582 minus 42°C	BUTADIENE 0.65 minus 5°C	PROPYLENE 0.61 minus 47.3°C	AMMONIA 0.682 minus 33.4°C	VCM 0.972 minus 13.4°C
1	2,226		1,320	1,270	1,418	1,330	1,488	2,120.4
2	2,604		1,544	1,485	1,659	1,556.7	1,740	2,480.5
3	2,604		1,544	1,485	1,659	1,556.7	1,740	2,480.5
TOTAL	7,434		4,408 mtns	4,240 mtns	4,736 mtns	4,444.1 mtns	4,968 mtns	7,081.4 mtns